

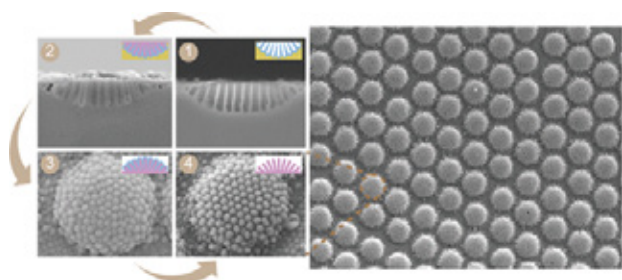


## Live Cell Imaging System

## Overview

CellScan (mobile version) and Cytoimage (single-point version) Live Cell Imaging Systems are real-time, quantifiable live cell imaging and analysis platforms designed for use within incubators. These systems enable remote monitoring of cell growth and acquisition of quantitative cell culture data. Users can set custom projects, and the system will periodically scan cultured cells, calculate cell numbers, and determine confluence. Cell growth data is automatically saved to the cloud, allowing researchers to monitor cell status at any time without entering the cleanroom.

## Features



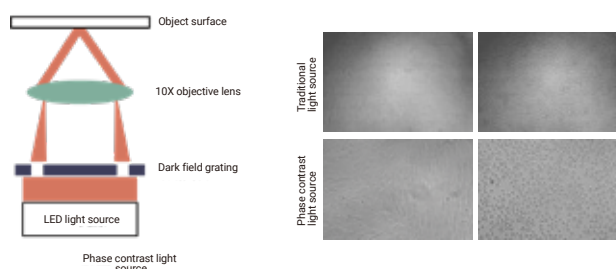
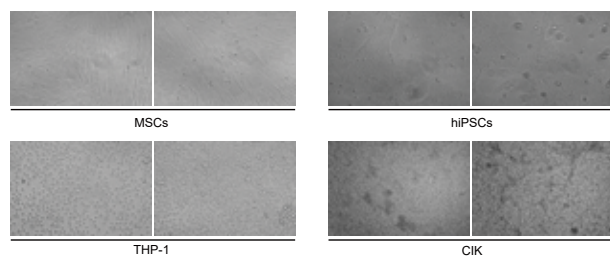
### Easy to Clean and Sterilize, Preventing Microbial Contamination:

The system has no dead angles for sterilization, and the surface is specially treated to withstand hydrogen peroxide sterilization.



### Closed Operation to Reduce Environmental Interference:

The system remains inside the incubator for direct observation of cells, minimizing risks caused by temperature fluctuations, medium disturbances, and contamination.



### Label-Free Imaging to Reduce Cell Damage:

Cells do not need to be stained, allowing for direct acquisition of cell status without harming them.

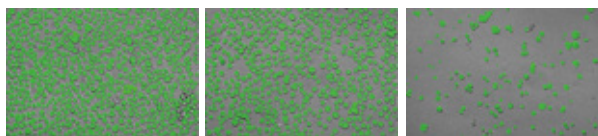
### Phase Contrast Light Source for Clear Image:

The special phase contrast light source, combined with optimized contrast algorithms, easily produces high contrast cell image.



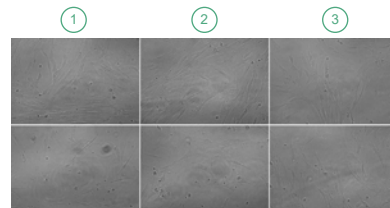
### Same-Side Imaging Compatible with Various Containers:

The reflective illumination imaging has no height limitations for containers, allowing it to accommodate various types of cultured dishes, plates, flasks, and cell factories.



### Automated Counting for Consistent Data:

Cell number and confluence are counted using AI algorithms, reducing variability caused by human subjectivity.



### Area Scanning for Accurate Data (CellScan ONLY) :

Provides area scanning for standard well plate and custom modules, enabling multi-point sampling.



### Cloud Control for Easy Operation and Data Security:

Monitor cell status anytime, anywhere using a smartphone or tablet, ensuring timely updates on cell conditions.

## Technical Specifications

Product Name	CellScan	Cytoimage
Operating Environment	Temperature: 37±0.3°C; Humidity: 0-99%	
Dimensions	W370×D440×H84 (mm)	W210×D225×H80 (mm)
Weight	Approx. 12.25kg	Approx. 3.25kg
Compatible Containers	Cell culture dishes (90 mm, 100 mm) Well plates (6-well, 12-well, 24-well, 48-well, 96-well) Culture flasks (T25, T75, T80, T150, T17, T225) Multi-layer culture flasks	
Illumination Wavelength	$\lambda=630\text{ nm}$	
Illumination Method	Phase contrast reflective illumination	
Magnification	10X	
Capture Size	100×100 (mm)	7.2×5.2 (mm)
Field of View	7.2×5.2 (mm)	
Image Size	2880×2064 pixels	
Sterilization Resistance	Vaporized hydrogen peroxide sterilization, UV sterilization, alcohol disinfection	
Cell Analysis	Cell confluence, cell counting	/
Data Statistics	Growth curve, doubling time curve	/
Data Export	Image files, video files*, CSV files	



**Zhejiang Tailin Bioengineering Co., Ltd**

No.2930 Nanhuan Road, Binjiang, Hangzhou, Zhejiang, China.

**TEL:**0086-571-86589087

**FAX:**0086-571-86689998

**E-MAIL:** marketing@tailingood.com

**WEB:** www.tailinscitech.com



@Tailin



@Tailin\_official



@TAILIN